

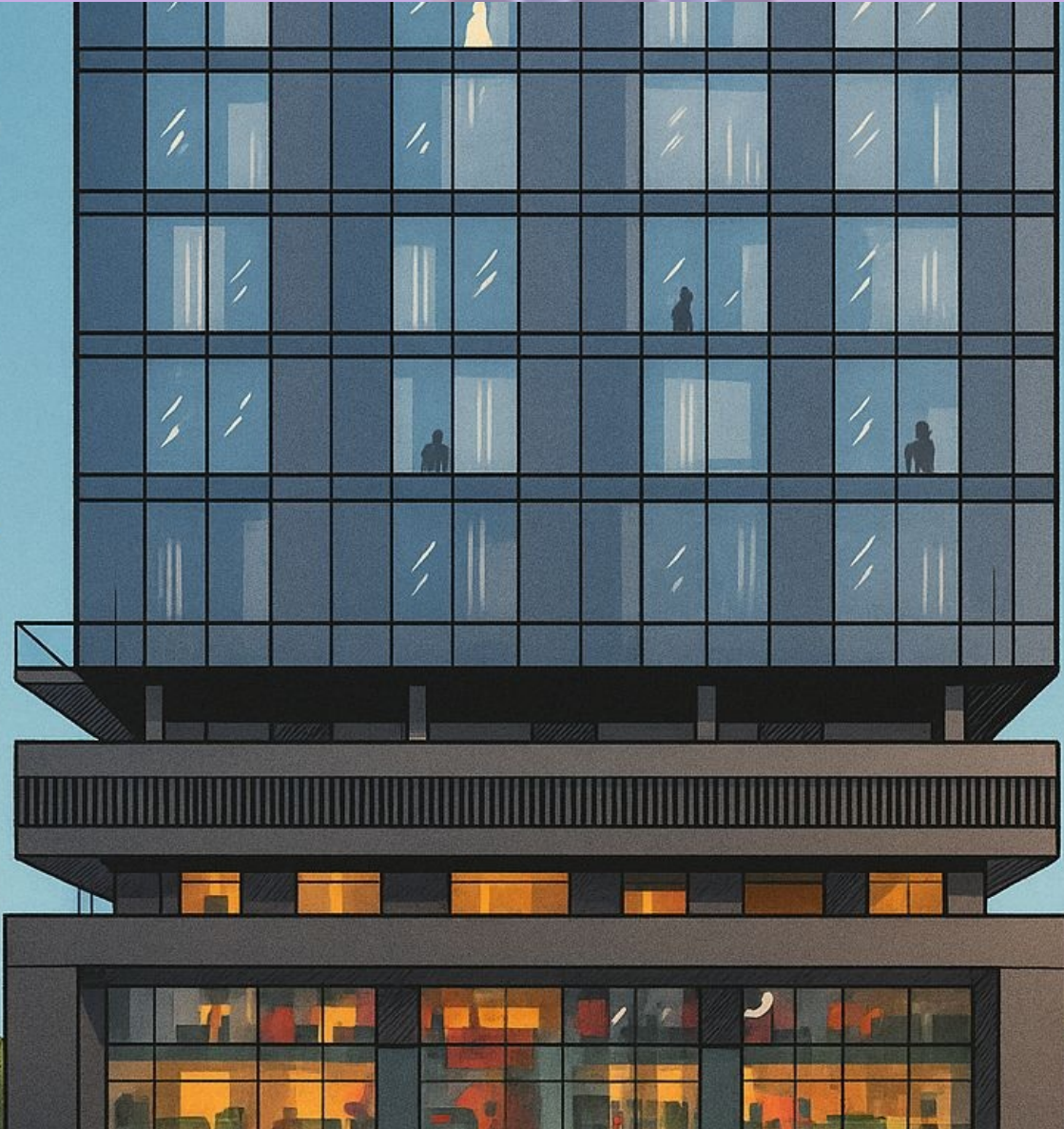
R V Solanki Beed

OBJECTIVE : INVESTMENT  
CONFIGURATION : OFFICE  
GRADE : NONE



DREAM WORKS  
REALTY (I) LLP  
August 15, 2025

## Option 1 - Commercial Preleased



LOCATION : Kharadi

SALEBLE AREA : 2536.0 -Sq.Ft.

AVG. ROI : 4.88 %

IRR : 8.5 %

POSSESSION : Ready

SFN : ★★☆☆☆

PRICE BRACKET

**3.50 Cr**

MONTHLY RENT

**136992.0**

REALTY DETECTIVE

Umesh

\*Disclaimer Detective : This document is privileged and confidential & not meant for circulation. It is being shared solely with the intent to guide the recipient and does not create any liability on the author. Facts and figures available in the public domain as well as authors' experience in the industry have been perused on best effort basis, to gather & make this information available at the recipient's request.

\*Notes : Areas, Possession & Package mentioned above are tentative and may differ from actual.

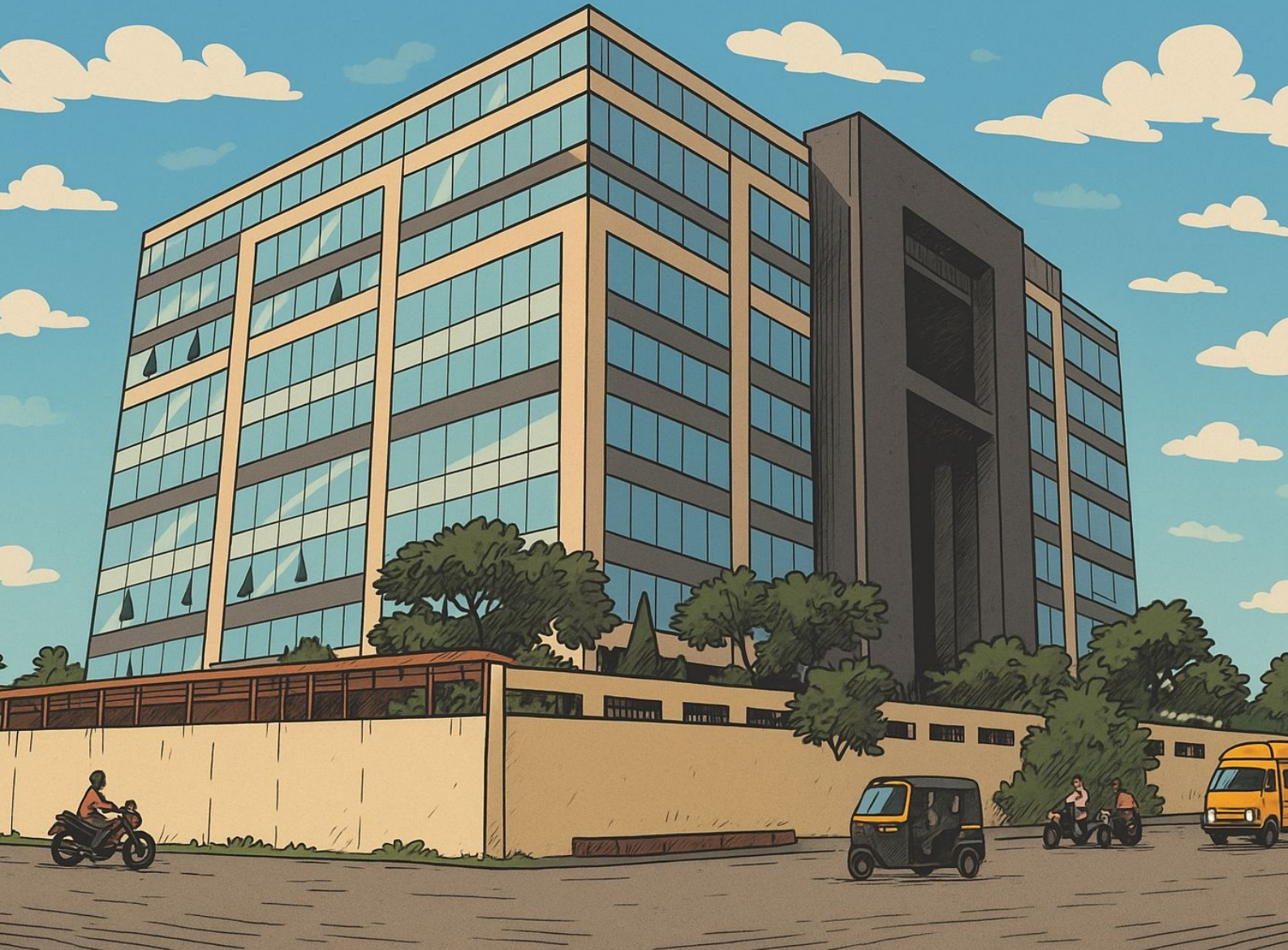
R V Solanki Beed

OBJECTIVE : INVESTMENT  
CONFIGURATION : OFFICE  
GRADE : A



DREAM WORKS  
REALTY (I) LLP  
August 15, 2025

## Option 2 - Commercial Preleased



LOCATION : PCMC

SALEBLE AREA : 2694.0 -Sq.Ft.

AVG. ROI : 7.83 %

IRR : 10.59 %

POSSESSION : Ready

SFN : ★★☆☆☆

\*Disclaimer Detective : This document is privileged and confidential & not meant for circulation. It is being shared solely with the intent to guide the recipient and does not create any liability on the author. Facts and figures available in the public domain as well as authors' experience in the industry have been perused on best effort basis, to gather & make this information available at the recipient's request.

\*Notes : Areas, Possession & Package mentioned above are tentative and may differ from actual.

PRICE BRACKET  
**4.57 Cr**

MONTHLY RENT  
**269583.0**

REALTY DETECTIVE  
Umesh



**R V Solanki Beed**  
**OBJECTIVE :INVESTMENT**  
**CONFIGURATION :OFFICE**  
**GRADE :A**



Advice, Assistance, Inspection,  
and Comparative Analysis

**DREAM WORKS  
 REALTY (I) LLP**

August 15, 2025

# Option 3 - Commercial Potential Preleased



**LOCATION :** Camp  
**SALEBLE AREA :** 1248.0 -Sq.Ft.  
**POTENTIAL ROI:** 5.25 %  
**IRR :** 8.98 %  
**POSSESSION :** Nearing Possession  
**POTENTIAL RENTAL INCOME:** 100.0  
**SFN :** ★★★★★

**PRICE BRACKET**  
**2.85 Cr - 2.95 Cr**

**POTENTIAL MONTHLY RENT**  
**124800.0**

**REALTY DETECTIVE**  
 Umesh

\*Disclaimer Detective : This document is privileged and confidential & not meant for circulation. It is being shared solely with the intent to guide the recipient and does not create any liability on the author. Facts and figures available in the public domain as well as authors' experience in the industry have been perused on best effort basis, to gather & make this information available at the recipient's request.

\*Notes : Areas, Possession & Package mentioned above are tentative and may differ from actual.



**R V Solanki Beed**  
**OBJECTIVE : INVESTMENT**  
**CONFIGURATION : OFFICE**  
**GRADE : A**



Advice, Assistance, Inspection,  
and Comparative Analysis

**DREAM WORKS  
 REALTY (I) LLP**  
 August 15, 2025

# Option 4 - Commercial Potential Preleased



**LOCATION :** Mundhwa  
**SALEBLE AREA :** 2256.0 -Sq.Ft.  
**POTENTIAL ROI:** 6.19 %  
**IRR :** 9.8 %  
**POSSESSION :** Nearing Possession  
**POTENTIAL RENTAL INCOME:** 85.0  
**SFN :** ★★★★★

**PRICE BRACKET**  
**3.72 Cr - 3.78 Cr**  
**POTENTIAL MONTHLY RENT**  
**191777.0**

**REALTY DETECTIVE**  
 Umesh

\*Disclaimer Detective : This document is privileged and confidential & not meant for circulation. It is being shared solely with the intent to guide the recipient and does not create any liability on the author. Facts and figures available in the public domain as well as authors' experience in the industry have been perused on best effort basis, to gather & make this information available at the recipient's request.

\*Notes : Areas, Possession & Package mentioned above are tentative and may differ from actual.



R V Solanki Beed

OBJECTIVE : INVESTMENT  
CONFIGURATION : OFFICE  
GRADE : A



Advice, Assistance, Inspection,  
and Comparative Analysis

DREAM WORKS  
REALTY (I) LLP

August 15, 2025

# Option 5 - Commercial Potential Preleased



LOCATION : kothrud

SALEBLE AREA : 1156.0 -Sq.Ft.

POTENTIAL ROI: 4.95 %

IRR : 8.72 %

POSSESSION : Nearing Possession

POTENTIAL RENTAL INCOME: 100.0

SFN : ★★☆☆☆

PRICE BRACKET

**2.80 Cr - 2.85 Cr**

POTENTIAL MONTHLY RENT

**115565.0**

REALTY DETECTIVE

Umesh

\*Disclaimer Detective : This document is privileged and confidential & not meant for circulation. It is being shared solely with the intent to guide the recipient and does not create any liability on the author. Facts and figures available in the public domain as well as authors' experience in the industry have been perused on best effort basis, to gather & make this information available at the recipient's request.

\*Notes : Areas, Possession & Package mentioned above are tentative and may differ from actual.



**R V Solanki Beed**  
**OBJECTIVE :INVESTMENT**  
**CONFIGURATION :SHOP**  
**GRADE :NONE**



Advice, Assistance, Inspection,  
and Comparative Analysis

**DREAM WORKS  
 REALTY (I) LLP**

August 15, 2025

# Option 6 - Commercial Potential Preleased



**LOCATION :** Moshi  
**SALEBLE AREA :** 964.0 -Sq.Ft.  
**POTENTIAL ROI:** 8.52 %  
**IRR :** 19.36 %  
**POSSESSION :** Under Construction  
**POTENTIAL RENTAL INCOME:** None  
**SFN :** ★★☆☆☆

**PRICE BRACKET**  
**1.61 Cr - 1.65 Cr**  
**POTENTIAL MONTHLY RENT**  
**99520.0**

\*Disclaimer Detective : This document is privileged and confidential & not meant for circulation. It is being shared solely with the intent to guide the recipient and does not create any liability on the author. Facts and figures available in the public domain as well as authors' experience in the industry have been perused on best effort basis, to gather & make this information available at the recipient's request.

\*Notes : Areas, Possession & Package mentioned above are tentative and may differ from actual.

**REALTY DETECTIVE**  
 Umesh